

ST. ROSE OF LIMA – MT. VERNON

GROWING

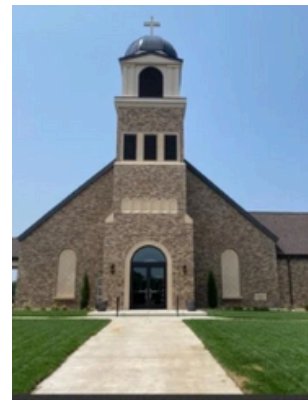
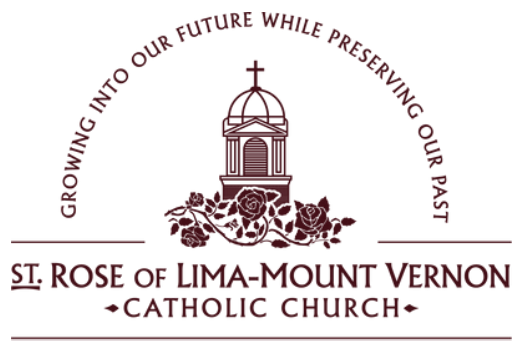
INTO OUR FUTURE

WHILE

PRESERVING

OUR PAST

2025 CAPITAL CAMPAIGN





CATHOLIC DIOCESE OF WICHITA

Office of the Bishop

424 North Broadway | Wichita, Kansas 67202

Dear Parishioners and Benefactors of St. Rose of Lima Parish, Mt. Vernon,

I congratulate you on your building endeavors over the last few years. It truly is remarkable to see the work you have accomplished by practicing the Stewardship Way of Life within your parish. You are truly building up the Kingdom of God in a rural part of our diocese.

I am very pleased to endorse the next phase of your master plan, constructing a Discipleship Center. This center will become home to faith formation efforts such as your Parish School of Religion (which has experienced notable growth in the last several years), Catechesis of the Good Shepherd, Catholic youth ministry, adult faith formation, and a food pantry. These service and formation opportunities truly further the mission of our entire Catholic Church, and I am grateful these are priorities for your parish.

Relationship is key to forming disciples in the Stewardship Way of Life, so I was excited to hear this space is being built also to foster relationships within your families by serving as a venue for events such as wedding and baby showers and family reunions. You will also have the opportunity to foster relationships within the parish through other activities such as the welcoming breakfast for new families, social activities and ministry-building opportunities to enhance prayer within your parish.

All of these purposes for your Discipleship Center promote the four Pillars of Stewardship: Hospitality, Prayer, Formation and Service. They are key tenets of living as "grateful disciples who recognize and receive God's gifts and share these gifts in love of God and neighbor" within our diocese. Of the four Pillars, Hospitality is the first because we must welcome people into our Church to encourage Prayer, to form them in the Faith and then to send them out in Service to others. This phase of your building projects furthers the pillar of Hospitality to enhance what you have already built in your parish. It, thus, builds up the entire diocese and the wider, universal Church.

I fully endorse and support your parish-based capital campaign which, in tandem with the diocesan capital campaign, *One Family, Fully Alive in Christ!*, will further the growth of St. Rose of Lima parish. I encourage you to give generously and sacrificially to this very important endeavor to make disciples and raise up a new generation of grateful stewards. Be assured of my prayers throughout this campaign.

Humbly Yours in Christ,

Most Reverend Carl A. Kemme, D.D.
Bishop of Wichita

Fully Alive as Missionary Disciples





ST. ROSE OF LIMA-MOUNT VERNON CATHOLIC CHURCH

Dear St. Rose Family,

When I was in grade school and high school, I used to work for my Grandpa Duling in his various businesses. I remember working long hours, and then after work or even on weekends, we would head down to the family farm in the Fall River/Piedmont, Kansas area to work even more. Sometimes, I had to miss athletic events or time with friends, which for a middle or high schooler felt like the worst thing that could ever happen. I never really understood why, after already working so hard, we had to keep working. But my dad, who managed one of the companies at the time, was right there alongside my brother and me, working with my grandpa, uncles, and cousins. We had a short window to get all the hay put up before it was too late. While I didn't understand it then, and often had a bad attitude about it, I would give anything to go back to those days, well, at least to the memories of them.

I share this story with you in this Capital Campaign letter because this might be the most challenging project we've taken on in the history of our parish, at least during my time as pastor. This campaign is difficult because it touches every part of our parish - every ministry, every family, from those who have always been here to those who will come long after we are gone. It is also our largest fundraising effort and the biggest financial investment we've ever considered, and it depends on everyone's generous participation.

We're taking this on at a time when our economic future and world peace feel uncertain. But that makes it all the more important to have a place where we can form disciples and put our trust in God. Right now, we simply don't have the infrastructure needed to grow into the potential God has in store for us. If you take time to fully explore this brochure, I believe you'll come to see that. And if you still have questions, please reach out to a member of the Capital Campaign Committee, the Building Committee, or me; we would love the opportunity to talk with you further and understand your perspective, even if we don't, yet see eye to eye.

The plans you may have seen, or will see in this brochure, are not final. If we're missing something or if you have a better idea, we welcome your input. This new Discipleship Center is about more than just PSR (although that is a vital ministry in our parish). This Center will be able to support multiple functions at once, from parish events to family gatherings, and will also allow us to welcome the broader community to our campus, helping us evangelize beyond our church walls. It will serve not just the lake area, but the greater Cheney community and even the Diocese.

When I had to go to the farm after a long day's work, I didn't agree with it and was often upset, because I couldn't see the bigger picture. But I trusted my dad and grandpa, and had faith in them so I went, sometimes begrudgingly, sometimes by force. Looking back, I'm incredibly grateful for those experiences. They gave me memories and life lessons I would never have learned otherwise. In the same way, I invite you to view this building project as an opportunity. Don't miss the chance to bless future generations. Don't miss the opportunity to help build a space where your children or grandchildren might celebrate a wedding reception, hold a funeral dinner, host a shower, or most importantly, encounter Christ and be formed as His disciples.

I am so proud of everything you've done to help build our parish into what it is today. Yes, this is a big undertaking, but it's not beyond us. We've been given a once-in-a-lifetime opportunity to do something great for our parish family. It will take all of us, but it will serve generations to come. My dad always taught me to leave things better than you found them. While I believe we've already done that, we now have the chance to do even more. With the intercession of St. Rose, and if it is God's will, we can achieve this goal - together.

With much love,

Fr. Daniel J. Duling

Pastor



Our History

Since its founding in 1911, St. Rose of Lima Parish in Mt. Vernon has been a beacon of faith, hospitality, and perseverance. Rooted in the devotion of early German Catholic families and guided by visionary leaders like Bishop John J. Hennessy and Fr. Bernard Garmann, our parish grew from humble beginnings into a vibrant community. From rebuilding after a devastating lightning strike in 1920 to building a school, rectory, and parish hall, all through the dedication of parishioners, St. Rose has always risen to meet the needs of its people.

Over the years, St. Rose adapted to changing times, including the transformation brought on by the construction of Cheney Reservoir and the shift from a farming community to a destination for visitors. Throughout, parishioners have faithfully maintained and improved our facilities, culminating in a joyful centennial celebration in 2011. Recognizing the growing needs and aging buildings, a Building Committee was formed in 2017. After extensive studies and parish dialogue, it was determined that building a new church and parish center would best serve current and future generations. On August 15, 2020, Bishop Carl A. Kemme led a groundbreaking ceremony, launching a bold, five-phase Master Plan to support our thriving parish, including our flourishing Parish School of Religion, which serves over 130 students weekly.

Join us as we honor our past as we invest in the future, preserving our legacy and providing space to welcome all who come to encounter Christ at St. Rose.

"Offer hospitality to one another without grumbling. Each of you should use whatever gift you have received to serve others, as faithful stewards of God's grace in its various forms."

-1 Peter 4:9-10

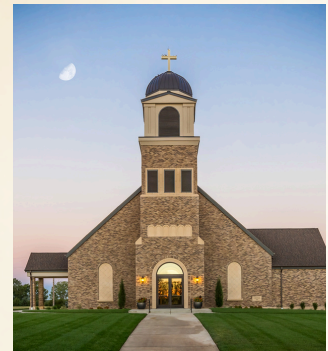


The Original Master Plan

When we first envisioned the future of our parish, we laid out a five-phase Master Plan designed to grow with our community and serve the spiritual and practical needs of our parishioners. Through the incredible generosity of both parishioners and friends of St. Rose of Lima, we've been blessed to see much of that vision come to life sooner than expected.

PHASE I: NEW CHURCH - COMPLETE

We broke ground on our beautiful new church in August 2020, and it was completed in the summer of 2021. This first and foundational phase created a sacred space that now welcomes our growing parish family for worship and celebration. The Adoration Chapel, which was originally planned later, was made possible during this phase thanks to an extraordinary gift of a non-parishioner.



PHASE II: PSR CLASSROOMS

A dedicated space for our Parish School of Religion (PSR) students was a priority in our Master Plan. This phase ensures our children have the room and resources they need to learn and grow in their faith.

PHASE III: RENOVATED PARISH HALL

This phase called for a complete renovation of our existing parish hall to make it more functional and welcoming for parish events, receptions, and gatherings.

PHASE IV: CAMPUS ENHANCEMENTS

This phase was designed to support and complete our physical campus. Phase IV included a new parking lot, a covered drop-off area for better accessibility, additional seating wings for the church to accommodate future growth, demolition of the existing church and parish buildings once new facilities were in place.

PHASE V: RECTORY - COMPLETE

Another remarkable gift from a generous non-parishioner allowed us to build the rectory shortly after construction of the new church. The new rectory was finished in the fall of 2023 and now provides a welcoming home for our pastor and serves as a meeting space for many parish meetings and activities (it is used for parish and youth meetings a lot).





Looking Forward

Thanks to the extraordinary generosity of donors, both within and beyond our parish, we've been blessed to accomplish so much of our Master Plan ahead of schedule. With this capital campaign, we now turn our focus to completing the remaining elements of that vision—with the exception of the future church wings, which are not a necessity at this time. This campaign will allow us to move forward with the construction of our new Discipleship Center and other planned campus improvements.

All funds raised or pledged during this campaign will stay right here at St. Rose of Lima and will be used exclusively for the construction of our new Discipleship Center and remaining campus improvements. These gifts will not be subject to the 10% diocesan tithes that typically applies to parish fundraising efforts. This rare opportunity has been made possible because a generous donor has already fulfilled our parish's full pledge to the Diocese of Wichita's "Fully Alive" campaign by matching our parish share.

It is important to note that this opportunity only applies to pledges and gifts made as part of this specific campaign. We will not have another opportunity like this in the foreseeable future. By participating now, your contribution will go further than ever before and help us complete the work we've faithfully begun.

Together, we are growing into our future while preserving our past. Thank you for being a part of this important moment in the life of St. Rose.

Project Details

Since the completion of our church, St. Rose has experienced remarkable growth, nearly doubling in the number of families we serve. In just a few short years, we've celebrated 65 baptisms, 69 First Communions, 67 Confirmations, 12 weddings, and welcomed 29 new members into Full Communion with the Catholic Church, and the momentum continues!

To meet the needs of our growing community, we've formed a new Capital Campaign Committee and welcomed fresh voices to our Building Committee. Together, we are launching the next phases of our parish Master Plan.

We are planning a new Discipleship Center, a

multi-purpose space designed to support our flourishing Parish School of Religion with dedicated classrooms that also serve as gathering spaces for parish families, ministry meetings, and formation opportunities. This addition will also include a zero-entry entrance for our food pantry, Isabel's Pantry, new parish offices, and a modern event hall to host weddings, parish celebrations, and community events.

With your prayers and support, we're building not just for today, but for generations to come. We hope you're as excited as we are to begin this next chapter in the life of St. Rose!

Meet the Team



Honorary Chairs

Ralph Reida
Fr. Dwight Birket

Co-Chairs

Matt & Jessa Albers



Capital Campaign Committee

Matt & Jessa Albers
Steve & Janice Garton
Debbie Hillman
Kate Holder
Shasta Wewe
Michelle Ogden
Fr. Daniel Duling
Betty Johnson

Building Committee

Kenneth Albers
Tim Bergkamp
Kyle Haworth
Tammie Hopper
Julie Peintner
Josh Scheer
Steve Seiler
David & Susan Woodard
Fr. Daniel Duling



How Your Gifts Will Make A Difference

Planned Additions and Upgrades

Porte-cochere Covered entrance with vehicle pass-through on south side of the church.

Isabel's Pantry Zero-entry entrance
Larger space
More storage

Education/ Meeting Wing 10 multi-purpose rooms
Restrooms
Gathering Space
Conference Room
Small kitchenette

Parish Hall Larger parish hall
Parish offices
Conference Room
Kitchen
Hall/Pantry Storage

Parking Lot Add 45 parking spaces
Add circle drive on south side
New entrance to cemetery

Enhanced Outdoor Areas Add benches, signage, and landscaping to the grounds for a welcoming appearance

Improved Technology Audio/video system
Improved wi-fi
TVs for classrooms

Campaign Materials & Support Consultant
Marketing Materials
Permits & Fees

Timeline

Our Path Forward

We believe this is more than a construction project, it's a journey of faith. Here is what you can expect as we move forward.

01

**Planning
Summer 2025**

- Leadership teams formed
- Architectural planning

02

**Campaign Kickoff
Fall 2025**

- Pledge drive launch
- Informational meetings

03

**Construction
Throughout 2026**

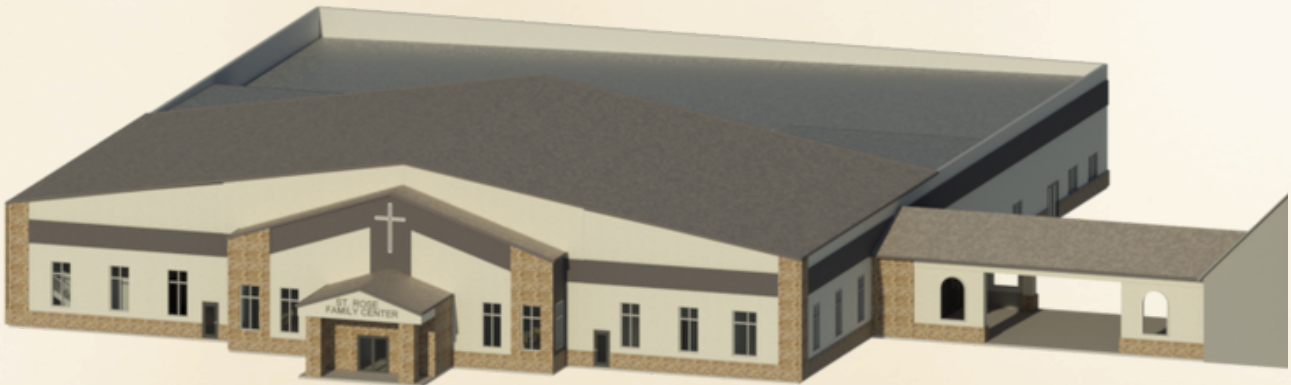
- Clear grounds
- Work begins

04

**Celebration
Early to Mid 2027**

- Grand opening & blessing of the Discipleship Center

Exterior Northeast View



Gathering Space



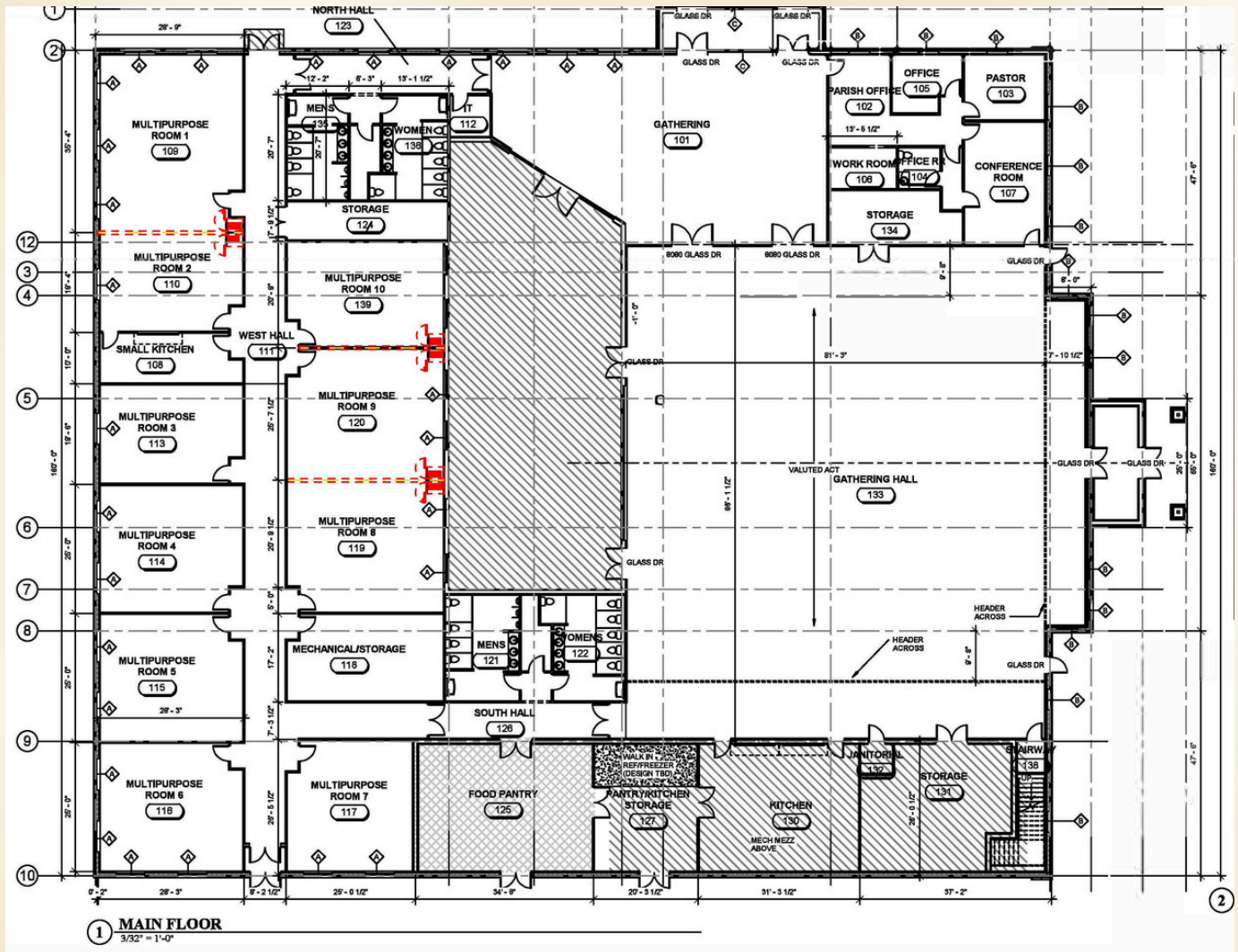
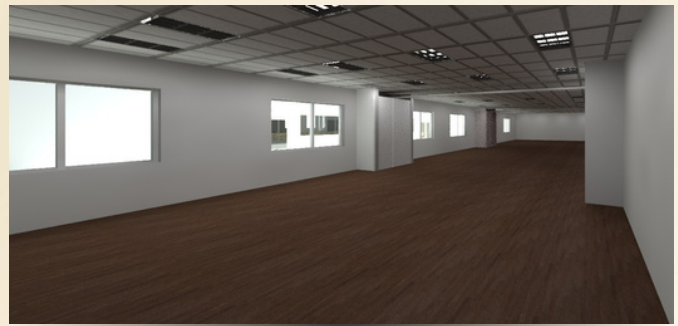
Kitchen



Reception Hall



Multi-purpose Rooms - Open



“The most exciting thing about all this project is to see the future of our parish and everything that’s happening around us. Since we built this church, our parish families have doubled in size; we weren’t expecting that. We built the new church thinking we would grow into it over the next 10-15 years. We’ll be in this church 4 years in August and we’re filling it up. With this rapid growth comes its own challenges, like the challenge of space for our programs and ministries. We simply don’t have enough space, and the space we do have is in such disrepair that it would cost us more to keep it up or repair it than it would to build something new. We’re in a spot, that if we don’t do this now, we’re going to hinder the growth of our parish, the growth of discipleship in our own personal lives, and bringing new people into the four-fold mission of what our church is - to be disciples. We’ve seen what has happened in our parish in the last 4 years, and this just adds to the excitement, the growth, and the disciples that we could have within this new Discipleship Center.”

-Fr. Dan Duling

Financial Commitment

Before making a financial commitment to the Growing Into Our Future While Preserving Our Past Capital Campaign, please be aware of the following:

- We are asking each household to make a 3-year pledge commitment which will enable members to distribute their investment over a manageable time period.
- When receiving your pledge information, please take time to consider and pray over the amount.
- Please do not reduce your normal giving in order to make a Capital Campaign gift.
- All commitments are confidential, only to be seen by the person recording the gift in the financial software.

How To Give

We are grateful for your support as we continue to grow and serve our parish family. As you consider your commitment, please consider the following options:

1 Cash, Check, ACH

Drop in the tithing basket, or mail a check to the office. **CHECKS MUST HAVE “BUILDING FUND” OR “CAPITAL CAMPAIGN” IN THE MEMO OR BE GIVEN IN A CAPITAL CAMPAIGN ENVELOPE FOR 100% OF THE FUNDS TO STAY WITH OUR PARISH.** You may also setup recurring donations with our ACH form, which can be found on the “Giving” page of the parish website.

2 Appreciated Assets, Retirement Accts

Funding charitable donations with appreciated stocks, bonds, or retirement account distributions can be advantageous to you and the church. In most cases, you will avoid paying any capital gains taxes while receiving a charitable deduction, and the church will receive a liquid asset. To claim these benefits, the asset must be transferred to the church rather than selling and donating the proceeds. Your legal and financial advisors can inform you about the most advantageous way to make the transfer.

3 Gifts from Cash Value of Insurance

If you have accumulated cash in your insurance policies, you may gift this to fulfill your commitment to the capital campaign.

4 Personal Property & Commodities

Personal property such as farm commodities, automobiles, artwork, jewelry, valuable collectibles, antiques and more may be donated to give you a charitable tax deduction for the full fair market value. The donor may be required to obtain a qualified appraisal to establish the gift value, depending on the type and value of the asset.

5 Real Estate that has Appreciated

Giving real estate that has been held for over one year and appreciated in value can be a great tax benefit. These benefits may include the full market deduction and no capital gains tax. If property has been depreciated on an accelerated basis, the deduction for the contribution may be subject to different rules.

Three-Year Pledge Chart

To help you plan your giving, we've included a convenient breakdown of what your monthly, quarterly, or annual payments would look like based on various 3-year pledge amounts. Every gift, no matter the size, makes a lasting impact. Thank you for helping us build the future of St. Rose!



THREE-YEAR PLEDGE CHART				
GIFT EXAMPLES				
TOTAL GIFT	MONTHLY	QUARTERLY	SEMI-ANNUALLY	ANNUALLY
\$100,000	\$2,778	\$8,334	\$16,667	\$33,3334
\$75,000	\$2,084	\$6,250	\$12,500	\$25,000
\$50,000	\$1,388	\$4,167	\$8,334	\$16,667
\$40,000	\$1,111	\$3,334	\$6,667	\$13,334
\$30,000	\$834	\$2,500	\$5,000	\$10,000
\$25,000	\$694	\$2,084	\$4,167	\$8,333
\$20,000	\$556	\$1,667	\$3,334	\$6,667
\$15,000	\$417	\$1,250	\$2,500	\$5,000
\$10,000	\$278	\$834	\$1,667	\$3,334
\$8,000	\$222	\$667	\$1,334	\$2,667
\$5,000	\$139	\$417	\$834	\$1,667
\$2,000	\$56	\$167	\$334	\$667
\$1,000	\$27	\$84	\$167	\$334
\$500	\$14	\$42	\$84	\$167

Testimonials

"I have two big reasons I support this campaign. Years ago when we had 2 little kids at home, we had vehicle trouble, so my wife and I ate beans for 2 months so we could feed our kids. There was nothing like a food pantry to help us out. So this is very important for our community. Second is the religion classes, which I taught here 50+ years ago. I often wondered if I had made an impact. A few years ago a former student came up to thank me because she said I explained the faith to her in a way no one else could when she was in my religion class, and that is what has made her stay a Christian all these years. I hope the more senior people in St. Rose appreciate what those 2 ministries do for our community and parish and support this campaign."



Ralph Reida
Lifetime Parishoner

" I grew up in this parish and received all my sacraments here. Our kids have as well, and have attended PSR throughout those years. What excites us most about this project is the opportunity to pass along facilities that will continue to grow the family and community at St. Rose, as well as help make disciples. The church is a living tradition, so we've all been called to make disciples. This next phase will do that." -Matt

"Our kids had such a great opportunity at St. Rose to grow in their faith, so I'm excited that we could be building an even better building for that, as well as to develop fellowship with our parishioners. It's just an exciting thing to be a part of right now. This campaign is something for you to think about and consider. It's not just for the current members, it's also for those future generations that are going to continue to grow and build their faith at St. Rose. We want to make it the best it can be for all those future generations "

-Jessa



Matt & Jessa Albers
Parishioners for 25 years as a married couple

"All the leadership & people at St. Rose - you can just see Jesus through them. It's inspiring to me having grown up in this parish. I'm really excited about all the changes happening at St. Rose. I think it's going to really help the youth and all the members here."



Hannah Arnold
Lifetime Parishoner

"Growing up in St. Rose, it's been a journey to realize what my faith really means. It's been impactful to be in the same place all my life and seeing how my faith has grown since I was a little kid. When I was a freshman I would think, 'I have to go to church', but now I've graduated and it's, 'I get to go to church'."



Carter Peintner
Lifetime Parishoner

"We have an opportunity here, before our parish, as costs will only continue to go higher the longer we wait; we've seen that just in the four years since the church was built. Anything you can do to help form these disciples and build the discipleship in our parish would be greatly appreciated."

-Fr. Dan Duling

St. Rose
CAPITAL CAMPAIGN

Offer hospitality to one another without grumbling. Each of you should use whatever gift you have received to serve others, as faithful stewards of God's grace in its various forms.

1 Peter 4:9-10

- Modern classrooms for our increasing PSR and CYM population which can also be used as multi-purpose rooms or to enlarge the parish hall space
- A new, accessible space for our food pantry, featuring no stairs and equipped with power outlets for refrigeration and freezers to store fresh food
- Renovated parish hall to match the modern elegance and aesthetic of our beautiful Church
- ST. ROSE OF LIMA-MOUNT VERNON CATHOLIC CHURCH

Stay Informed

Want to stay up to date on our Capital Campaign progress? Visit our Capital Campaign page for the latest news, fundraising progress, and project updates.



St. Rose of Lima - Mt. Vernon

CAPITAL CAMPAIGN PRAYER

Gracious Father, as the people of St. Rose of Lima, we pray that you encourage us to Grow into our Future while Preserving our Past. Help us to understand that we are many members but one family under your name.

We truly thank you for the gifts in which you have bestowed upon our families and parish. Help us to recognize these gifts we have received through our founding members and to graciously give back to you. We ask you for your continued guidance for our leaders, and to bless all of our volunteers.

If it be Your will, we ask that you bestow your blessings upon our building projects and campaign, that we as a parish family may gather under one roof to celebrate You in the Liturgy. Together we entrust this prayer to the intercessions of St. Rose of Lima.

Amen



ST. ROSE OF LIMA-MOUNT VERNON
CATHOLIC CHURCH

PO Box 528, Cheney, KS 67025